

XSPlatforms® **XSGUARDRAIL**

FOR FIVE-STAR EDGE PROTECTION

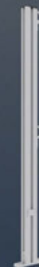
In essence, guardrails are placed on locations to prevent access to a certain area. In terms of fall protection, this isn't very different. A guardrail system prevents those who work or walk at height from reaching an area where a fall hazard exists. This way, the risk of falling off a roof is eliminated.

At XSPlatforms we distinguish our guardrails in two categories: temporary (free-standing) and permanent. All types of XSPlatforms' guardrails can be installed with a maximum distance of 8 feet between each upright. This means that less uprights are needed when a long distance needs to be covered by the guardrail system.

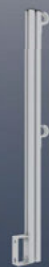
Our guardrail systems are easy to install, resulting in a short installation time. This enables the installer to save on the installation costs. Furthermore, when opting for the XSFlex guardrail, the roof surface isn't damaged and the system can be folded down to hide it.



XSFlex
Free-standing guardrail



XSParapet fixed
Permanent guardrail



XSWall fixed
Permanent guardrail

INQUIRE NOW AND DISCOVER THE POSSIBILITIES

UNIQUE SELLING POINTS OF AN XSPLATFORMS GUARDRAIL SYSTEMS:

- ✓ High-end, stable guardrail system
- ✓ Competitive pricing
- ✓ Easy to install
- ✓ Flexible usage (fixed, removable and foldable)
- ✓ No damage to roof surface (XSFlex)
- ✓ Less uprights needed for longer distances
- ✓ No drilling/riveting in the components is required.
- ✓ Can be delivered in various colours (colour anodizing)
- ✓ The system could be installed by one person only.

XSFlex

This type of guardrail is not fixed to the (roof) surface, it's a freestanding guardrail. It is held in place by XSMass counterweights (approx. 50 lbs each) placed on the horizontal beam of the guardrail. When installed with an open end, it will require the installation of two counterweights on the last horizontal beam.

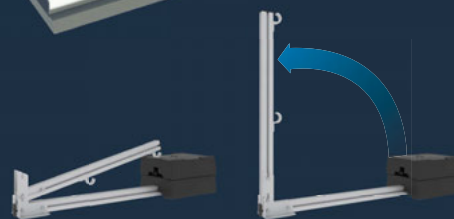
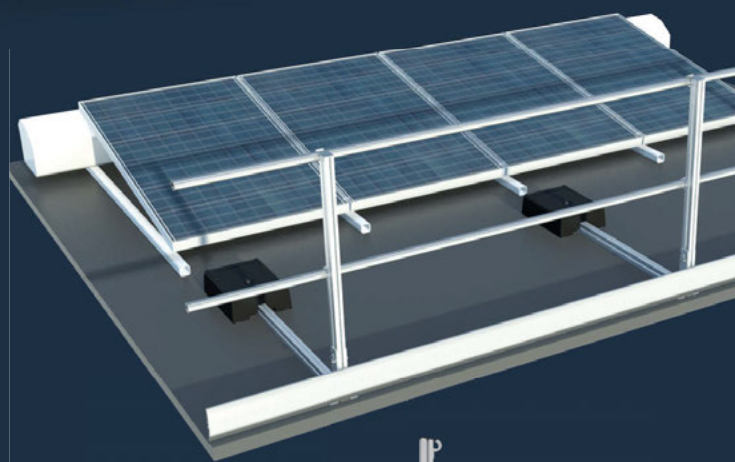
An advantages of this type of guardrail is that they can be removed if needed. Furthermore, no drilling is necessary to mount the system, so the risk of leakage is eliminated and installation time is optimized.

FLEXIBLE USE

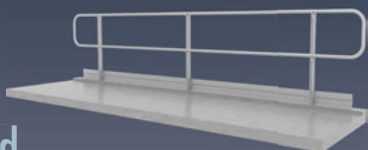
Another feature of this type of guardrail is that it can be folded down when it isn't used. This results in a system that's not visible from a lower level, so the aesthetics of a building aren't compromised.



Fall protection, such as a single anchor point, is required to safely fold out the guardrail system when it's needed.

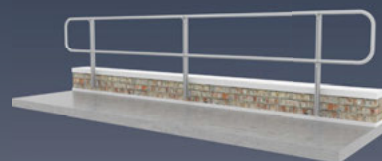


XSParapet Fixed



This permanent guardrail system is, as the name suggests, fixed to the surface. In general, this guardrail is mounted to a roof surface or parapet. The advantage is that the guardrail system is always present and safe access to the roof is always possible for authorized personnel. It can be installed on various types of roof surfaces and on top of parapets.

XSWall Fixed



When a parapet is lower than the safety standards prescribe to safely access a roof, a guardrail can be installed to create a safe zone. This permanent guardrail system is either mounted on top (XSParapet Fixed) or on the inside (XSWall Fixed) of the parapet/wall.

CERTIFICATIONS

XSPlatforms guardrails are designed to meet the requirements of:

- ✓ AS 1657:2013 - Fixed platforms, walkways, stairways and ladders - Design, construction and installation
- ✓ AS/NZS 4994.1:2009 - Temporary edge protection - General requirements
- ✓ OSHA 1910.29 - Fall protection systems and falling object protection-criteria and practices
- ✓ OSHA 1926.502 - Fall protection systems criteria and practices

INTERESTED?

Would you like to know more about our Guardrail systems and its possibilities? Or would you like to receive a quote?

Feel free to contact our XSPlatforms' certified partner at any time, they will be happy to help you.

ALTITUDO d.o.o.
Dalmatinska 107/16 ,
11050 Beograd-Zvezdara

+38160 47 606 44
www.altitudo.rs
office@altitudo.rs