

# SAFETY BY XSPLATFORMS

SAFETY WITH A 



ALTITUDO d.o.o.

**XSPlatforms®**  
*Certified Partner*

# XSPHILOSOPHY: CHOOSING FALL PROTECTION MADE EASY

At XSPlatforms we believe that working at heights should be safe and simple. And choosing the right fall protection solution should be simple too. That is why we've developed our five star system. And just like with everything we do, our five core values were leading in this process.

## 1 SAFETY ABOVE ALL

Whether you choose the maximum safety level or the most cost-efficient safety level, choosing XSPlatforms solutions guarantees working safely at height. Because we offer extensive instructions with all our products, we make sure that anyone who uses our systems can do so in the safest possible way.

## 2 FOCUS ON THE CUSTOMER

When it comes to customer service and support, we always want to take that extra step. The five star system is one of the methods we've developed to help you create a safe working environment at height.

## 3 SIMPLICITY DEFINES QUALITY

Our five star system takes choosing the right fall protection system to its most basic level. And with the expert advice of your XSPlatforms certified installer you will always find the best solution for your situation.

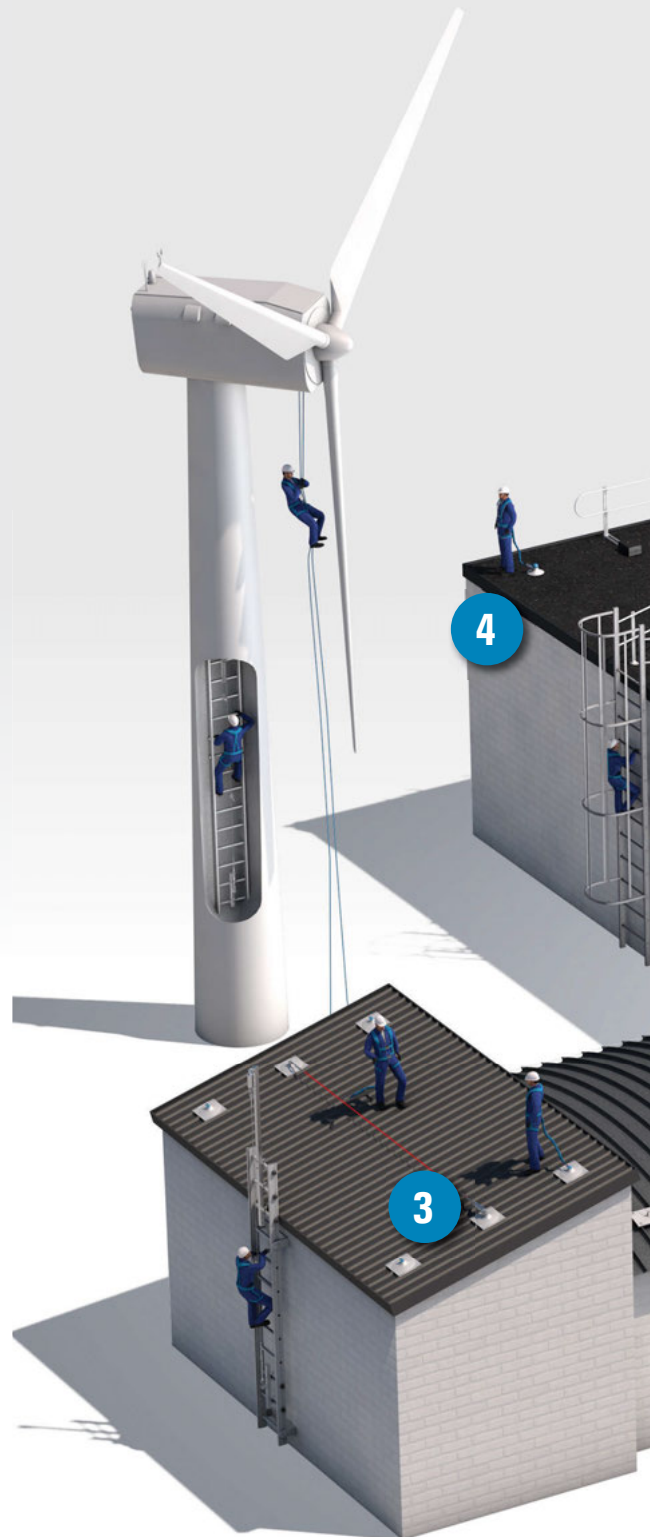
## 4 THE BEST ISN'T GOOD ENOUGH

Whichever safety level you choose, you can be sure you are buying the best solution available. All of our solutions are tested according to the highest standards, and beyond. Guarantying you the best quality in the industry.

## 5 THERE'S NO SUCH THING AS A PROBLEM

We don't believe in problems, we believe in challenges. Where others see problems, we see possibilities. And whenever something seems impossible, we'll look for a way to make it possible. Even for the most complex situations or buildings, we will find the best possible solution for your fall protection needs.

To read the complete XSPhilosophy visit [xsplatforms.com](http://xsplatforms.com)



# THE FIVE STARS OF FALL PROTECTION

XSPlatforms' five star system describes five levels of safety using fall protection solutions. Ranging from the highest safety level, with maximum freedom of movement, to simple systems that cover all the bases, but require a little more user know-how.



## TAILOR-MADE SOLUTIONS

Out of all fatal work-related accidents approximately 14% are caused by falling. Most of these accidents could have been prevented by adequate fall protection.

With XSPlatforms' five star system you'll always find the right fall protection solution for your working situation. We offer solutions ranging from the highest safety level - with maximum freedom of movement - to simple systems that cover all the bases.

Your XSPlatforms' certified installer can create a customized fall protection and roof edge protection solution that perfectly fits your needs and wishes. Our guarantee? A combination of optimal safety and maximum mobility.

## LEGEND

1. GUARDRAILS
2. LIFELINE ALONG ROOF EDGE
3. LIFELINE WITH ANTI-PENDULUM ANCHORS
4. SINGLE ANCHOR POINTS + ANTI-PENDULUM
5. TEMPORARY LIFELINE + ANTI-PENDULUM



# EXPLANATION 5 STARS SAFETY LEVEL



The XSGuardrail system of roof edge railings, with toe boards, turns the entire roof into a safe access area without the need for special precautions or personal protection gear. There is no specific user knowledge of fall protection systems required.

## MAXIMUM PERMANENT SAFETY

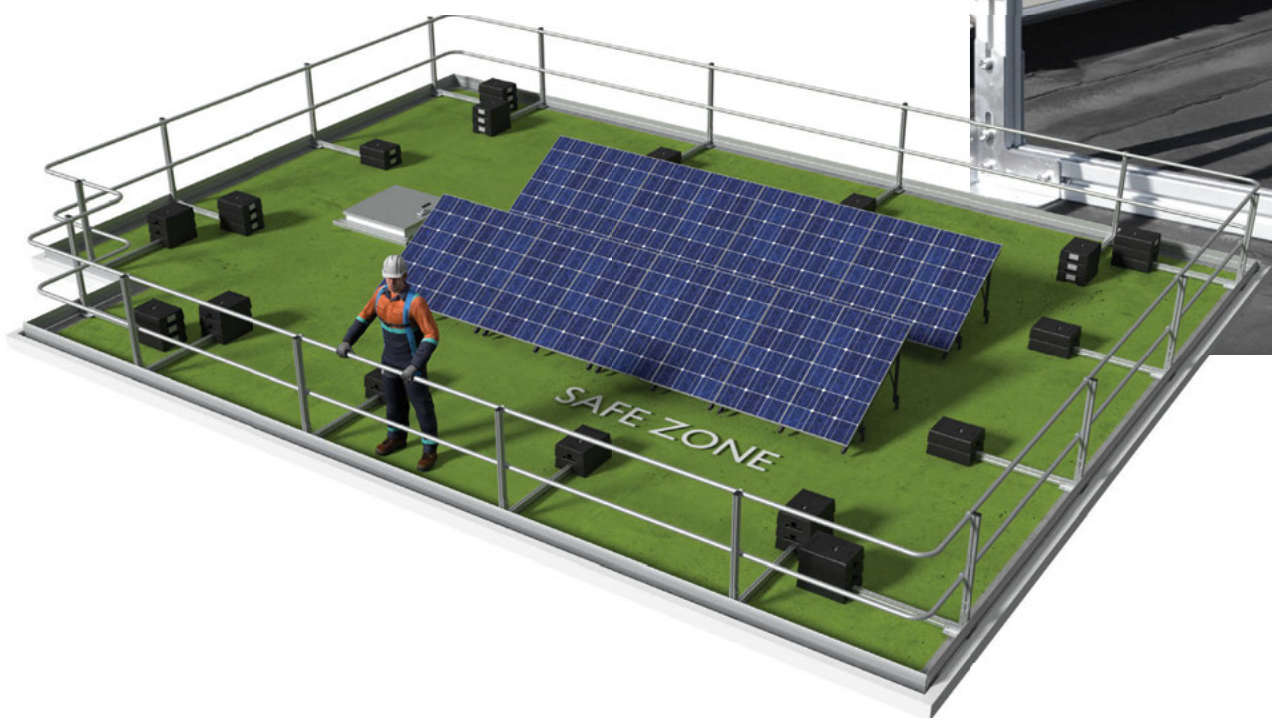
- ✓ Number of users: unlimited
- ✓ Suitable for: any roof type
- ✓ System: XSGuardrail

## INSTALLATION

The XSGuardrail system is available with straight, curved, or folding posts. The free-standing structure can be mounted on practically any type of roof and can be used as a temporary or permanent solution.

## PROPERTIES

- Permanent and temporary use
- Choice of straight, curved, or folding posts
- Requires no user know-how





# EXPLANATION

## 4 STARS

# SAFETY LEVEL



Permanent XSImpact anchor points used with a LinkedPro or XSLinked steel cable system. The variable distance between the XSImpact anchor points depends on the type of system. Users are attached by a “traveler”, but retain complete freedom of movement.

### PRACTICAL SAFETY

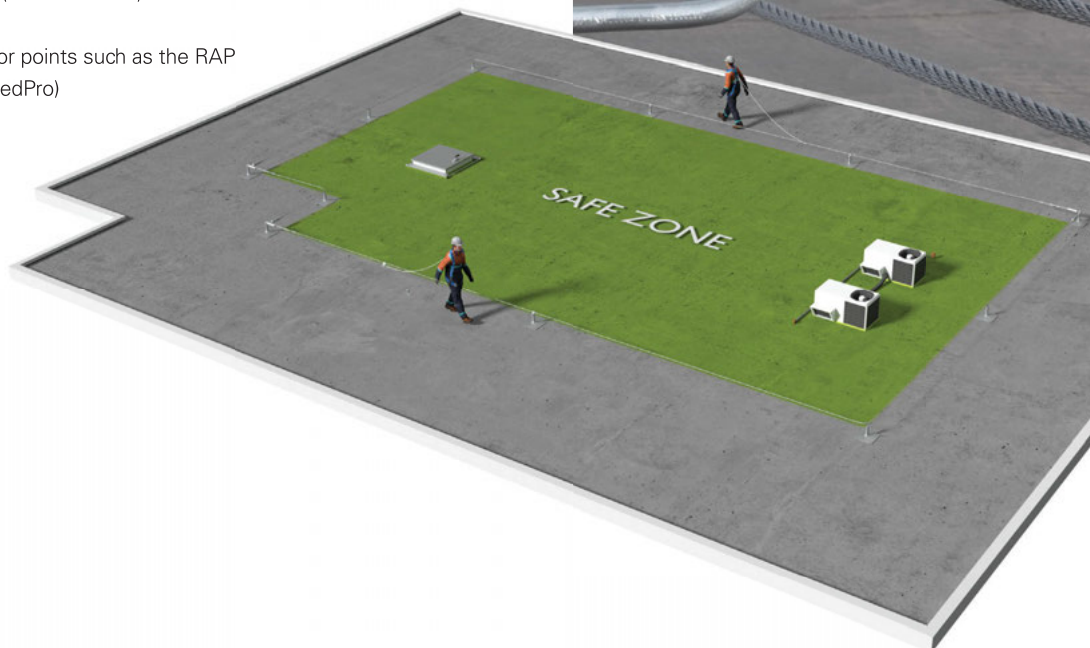
- ✓ Number of users: 2 to 6 persons per track.
- ✓ Suitable for all roofs. Suitable for: any roof type
- ✓ System: LinkedPro or XSLinked

### INSTALLATION

A series of anchoring points, connected by one or more steel cable creates a permanent steel cable track that follows the contours of the roof edge at a distance of 2 to 4 meters (6.6 to 13.1 ft). Tracks placed at 4 meters (13.1 ft) can also serve as a safe area marker. Users are permanently attached and enjoy optimal freedom of movement on both sides of the steel cables. Because the steel cable track is at a fixed distance from the roof edge, the user only needs to set the length of the lanyard once. After hooking on to the steel cable track, the user can walk over the entire roof deck safely.

### PROPERTIES

- Access to the entire roof surface
- Hook up once for maximum safety
- XSLinked-system with variable distance between posts of 10 to 14 meter (32.8 to 45.9 ft), LinkedPro from 8 to 12 meter (26.2 to 39.4 ft).
- Steel cable track marks the safe zone
- Can be expanded with additional anchor points such as the RAP
- Users can pass each other safely (LinkedPro)
- Multiple “routes” possible (LinkedPro)



# EXPLANATION 3 STARS SAFETY LEVEL



Permanently attached XSImpact anchor points included in a LinkedPro or XSLinked steel cable system and installed approximately 39.4 ft apart. This system is complemented with additional anchoring points at the corners of the roof to prevent the pendulum effect in the event of a fall.

## PRACTICAL AND COST-EFFECTIVE SAFETY

- ✓ Number of users: 2 to 6 persons per track
- ✓ Suitable for: roofs up to 16 metres (52.5 ft) wide
- ✓ System: LinkedPro or XSLinked

## INSTALLATION

Two or more permanent anchoring points, interconnected by one or more steel wires, form a permanent steel cable system. The steel cable track ensures users can walk over the entire roof deck safely after hooking on. The length of the lanyard is set by the user for each work area. This makes the system safe and easy to use, but does require some user-knowledge.

## PROPERTIES

- Access to the entire roof surface
- Lifeline length needs to be adjusted when changing working locations
- Most cost-effective steel cable track solution
- Requires some user know-how
- Can be expanded with additional anchor points such as the RAP
- Can be expanded using LinkedPro (1 or 2 extra lines)



# EXPLANATION

## 2 STARS

# SAFETY LEVEL



Permanently fitted anchor points at intervals of up to 19.7 ft and at approximately 13.1 ft from the roof edge, with optional additional anchor points at the roof corners to prevent the pendulum effect in the event of a fall.

### COST-EFFECTIVE SAFETY

- ✓ Number of users: one to two persons per anchorage point
- ✓ Suitable for: roofs 8 m (26.2 ft) wide and over
- ✓ System: XSGlobe, RAP Globe or XSImpact 360°

### INSTALLATION

A number of anchorage points are fitted at intervals of up to 6 metres (19.7 ft) and at approximately 4 metres (13.1 ft) distance from the roof edge. The user hooks up his lifeline directly to one of these anchorage points. He changes anchorage points according to the working location, hooking up to the nearest anchorage point when moving across the roof surface.

### PROPERTIES

- Suitable for roof surfaces 8 metres (26.2 ft) wide and over
- Requires more anchorage points than the 3 & 4 star system, so more drilling in the roof surface
- Requires user know-how
- Reduced safe zone





# EXPLANATION 1 STARS SAFETY LEVEL



Permanently fitted type XSGlobe or XSImpact 360° anchorage points at intervals of up to 60.7 ft. The anchor points are located along the roof center line as much as possible and are connected by a temporary mobile lifeline.



## MINIMUM REQUIRED SAFETY

- ✓ Number of users: two persons per mobile lifeline
- ✓ Suitable for: roofs 26.2 ft wide and over
- ✓ System: Temporary mobile lifeline

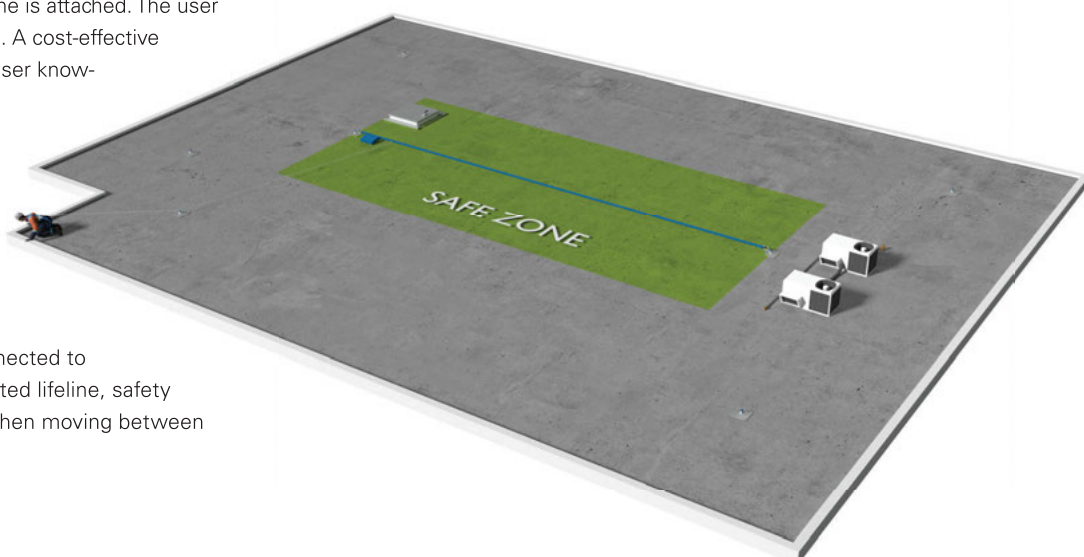
## INSTALLATION

This solution consists of at least two permanent anchorage points between which a temporary mobile lifeline is attached. The user hooks up his lifeline to the mobile lifeline. A cost-effective solution, but one that requires in-depth user know-how. The system can optionally be fitted with anchorage points at the roof corners to prevent the pendulum effect in the event of a fall.

When moving along the roof surface, the user needs to move the mobile lifeline to the appropriate anchorage points. Once the user is connected to the mobile lifeline with a correctly adjusted lifeline, safety is ensured. However, care is required when moving between working locations.

## PROPERTIES

- Limited application, takes into account the roof width and deflection (available for heights from 18 ft)
- Sufficient fall protection knowledge required for use
- When using XSImpact 360°, easy to include additional anchor points for the RAP



ALTITUDO d.o.o.



# SAFETY WITH A STAR PRODUCTS



## XSGUARDRAIL SYSTEMS

XSGuardrail is available as "straight" fencing as well as in folding and curved versions. The curved designs provide added security (by keeping people further from the eaves) and the attractive design can accentuate the architectural features of a building.



## LINKEDPRO & XSLINKED SYSTEMS

LinkedPro and XSLinked steel cable tracks, including an integrated shock absorber. The XSImpact Pro can be used with LinkedPro or XSLinked products to create a steel cable track. Products such as: XSIntermediate (Pro), XSEdge 45° & 90° (Pro), XSTerminal (Pro), XSTensioner II (Pro) system, etc.



## XSGLOBE, RAP GLOBE & XSIMPACT 360°

Both the XSGlobe and RAP GLOBE as the XSImpact 360° are suitable as stand-alone anchoring point as seen in the two star system (with a maximum interval of 6 metres / 19.7 ft). The XSImpact 360° is equipped with an integrated fall arrestor. With a maximum interval of 18,5 metres (60.7 ft) both types of anchorage points can be combined with a mobile lifeline as seen in the one star system.



## XSLIFELINE SYSTEM

In situations where a steel cable track is needed but can't be used, a (temporary) mobile lifeline can offer a solution. By attaching a mobile lifeline in between two anchorage points, the user can work safely for a distance of 5 to 18,5 meters (16.4 to 60.7 ft) distance. The mobile lifeline can be used by two persons/workers simultaneously.



# PERMANENT VS. MOBILE FALL PROTECTION

## PERMANENT FALL PROTECTION

XSPlatforms, being specialist in permanent fall protection, has been developing lots of different permanent fall protection systems for all kinds of buildings and objects. On a daily basis, the company deploys its expertise, knowledge and experience in developing user friendly fall protection systems of high quality. Because no two buildings are the same and conditions can differ, customization is the key word in XSPlatforms' products. In cooperation with you, XSPlatforms searches for the best fall protection system for you, with maximal safety and comfort guaranteed. Whether you need a steel cable system, anchorage system or guardrail, XSPlatforms has the right model for you or designs it. The one goal we have is making sure you won't be able to fall down.

## MOBILE FALL PROTECTION

Not all buildings or objects contain a permanent fall protection system. To make sure people can work safely on the roof, XSPlatforms has a complete range of mobile fall protection. With XSPlatforms' harnesses, fall arrest devices, safety hooks or positioning lines you are able to create safe working conditions, making sure your employees can work safely at height and feel comfortable. XSPlatforms' products are of high quality and surpass the most strict safety requirements. That's why XSPlatforms is known as the high quality standard in fall protection.



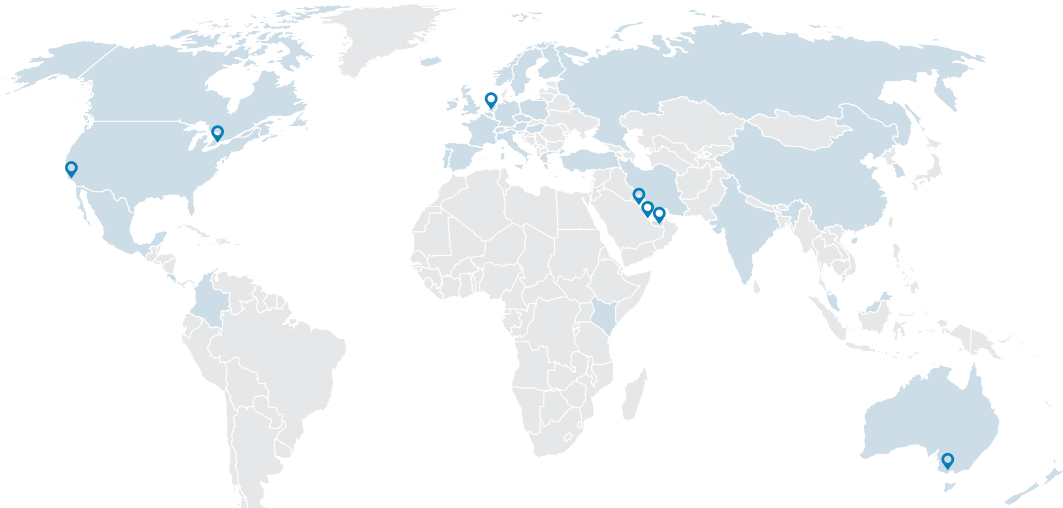
For more information regarding XSPlatforms permanent or mobile fall protection, visit [xsplatforms.com](https://xsplatforms.com) and download our brochures.

# ABOUT XSPLATFORMS

In 1997, we began to provide safety equipment for people working on roofs in the Netherlands. At that time, safety was already more of a calling than a business.

Now, we are a rapidly growing international company that designs safety solutions for the most complex buildings around the world. Today, we still have the same aspiration that we had almost twenty years ago: to make working at heights safer and easier — for everyone, everywhere.

The simplicity of our solutions and our many successful projects in the past prove that innovation is in our DNA.



- XSPlatforms Certified Partners (countries/regions with)
- XSPlatforms branches

## VISION

We believe that we can make work at height safer.

XSPlatforms works towards a world where those responsible for safety at heights are aware of the dangers, and have everything they need to preclude the risk of falling.

In our vision, the safety of a work environment at height should be self-evident.

## MISSION

Our goal is to serve forward-looking clients around the world with superior safety solutions and world class service.

We aim to warrant the sustainable growth of XSPlatforms by building long-term relationships with all our clients, Partners and employees.

We want XSPlatforms to be recognized as the world's number 1 brand for safe work at height.



Facade Access Equipment  
[FacadeXS.com](https://FacadeXS.com)



Fall Protection  
[FallProtectionXS.com](https://FallProtectionXS.com)



Suspended Platform Systems  
[SuspendedXS.com](https://SuspendedXS.com)





**ALTITUDO d.o.o.**  
Dalmatinska 107/16 ,  
11050 Beograd-Zvezdara

+38160 47 606 44  
[www.altitudo.rs](http://www.altitudo.rs)  
[office@altitudo.rs](mailto:office@altitudo.rs)

***XSPlatforms***<sup>®</sup>  
***Certified Partner***

---